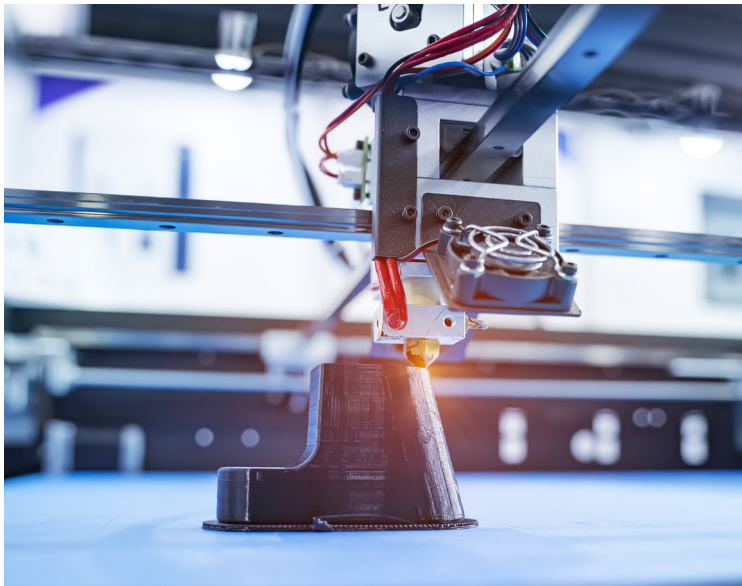
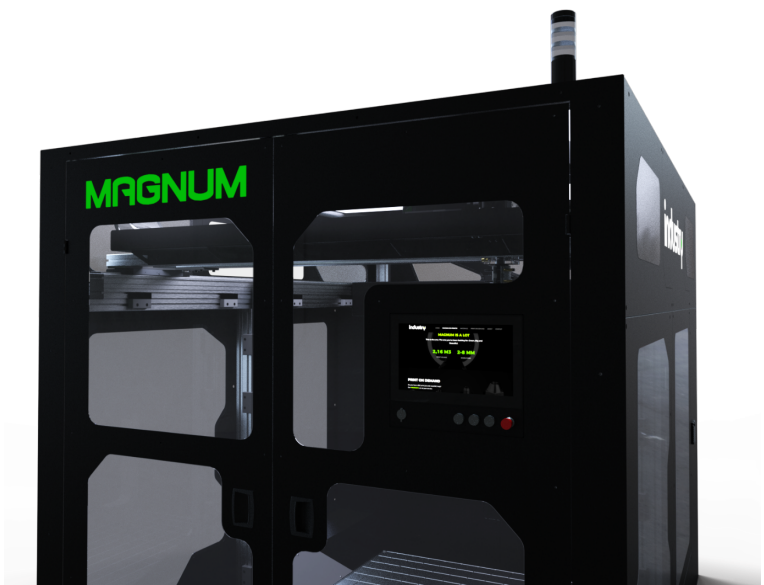




ecorub



**Printservice &  
Compounding**







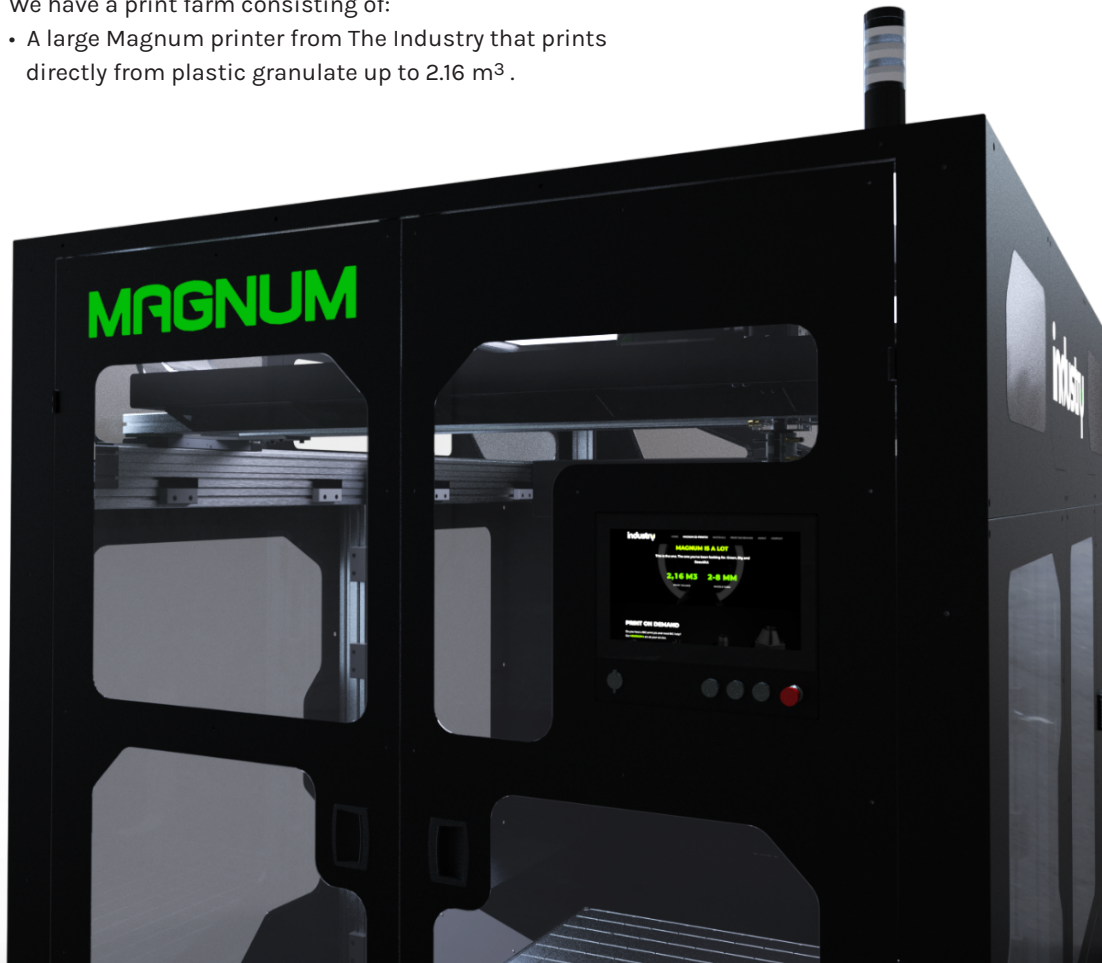
# Printservice

EcoRub offers a print service for the production of prototypes or smaller series manufacturing. We can also assist with the preparation and production of design and print files. No project is too big or too small.

## Magnum printer

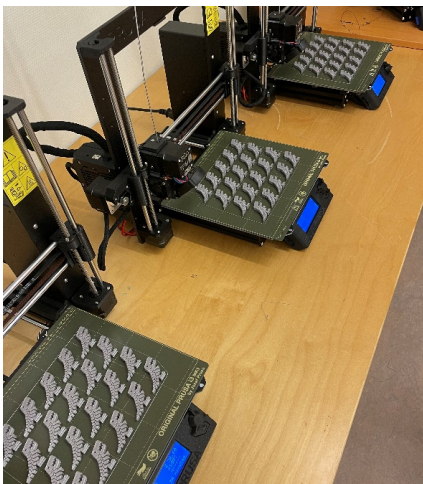
We have a print farm consisting of:

- A large Magnum printer from The Industry that prints directly from plastic granulate up to 2.16 m<sup>3</sup>.



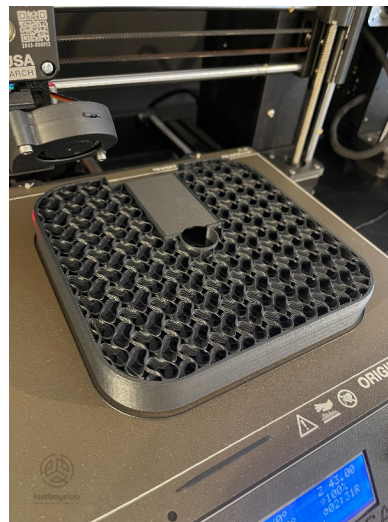
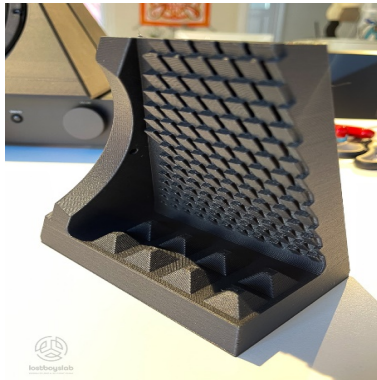
## Prusa i3 MK3S

- Over 10 Prusa i3 MK3S filament printers.



# Addnite® filament via Lostboyslab

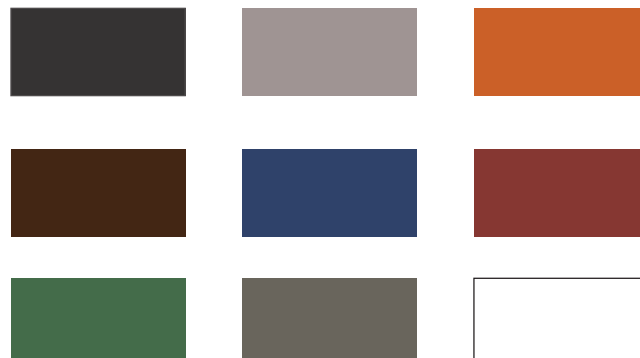
EcoRub develops the granulate used in the manufacturing of this filament. The end product is sold by Lostboyslab under its Addnite® brand. This material has been developed in close collaboration between the two companies and more materials are coming.



## Granulate for 3D printers

EcoRub has a range of 13 different materials for use in 3D printing. Our materials have been developed to be easy to use and produce good results in each and every print.

TPPR PRTG EP	
COLOURED TPRR PETG	
BLACK	NCS S9000-N
LIGHT GREY	NCS S5502-Y
ORANGE	NCS S2075-Y60R
BROWN	NCS S8010-Y50R
BLUE	NCS S5040-R90B
RED	NCS S3560-R
GREEN	NCS S6530-G10Y
DARK GREY	NCS S7000N
WHITE	NCS S 0300-N



NB Print colour may differ from the colour reproduced. For more exact colours, contact EcoRub.











---

# Compounding

EcoRub offers both laboratory and production scale compounding of new material mixes. Evaluation of process parameters and material components is efficiently carried out on laboratory scale. In connection with our compounding services, we can also manufacture test bodies for the purposes of evaluating mechanical characteristics, flowability through melting index, and UV resistance, etc. We also offer large scale compounding for conventional materials and for successful material formulations after small scale evaluation in laboratory extrusions. Injection moulding of test bodies and measurement of material characteristics is also available for the purposes of quality assuring production. Thermoplastic colouration can also be offered in the form of master batches.

## Small scale compounding

Double screw extruder with 20 mm screws, L/D ratio 42 with a capacity of 5-10 kg/h.

## Large scale compounding

Double screw extruder with 95 mm screws, L/D ratio 38 with a capacity of 600-1000 kg/h.

## Injectionmoulds

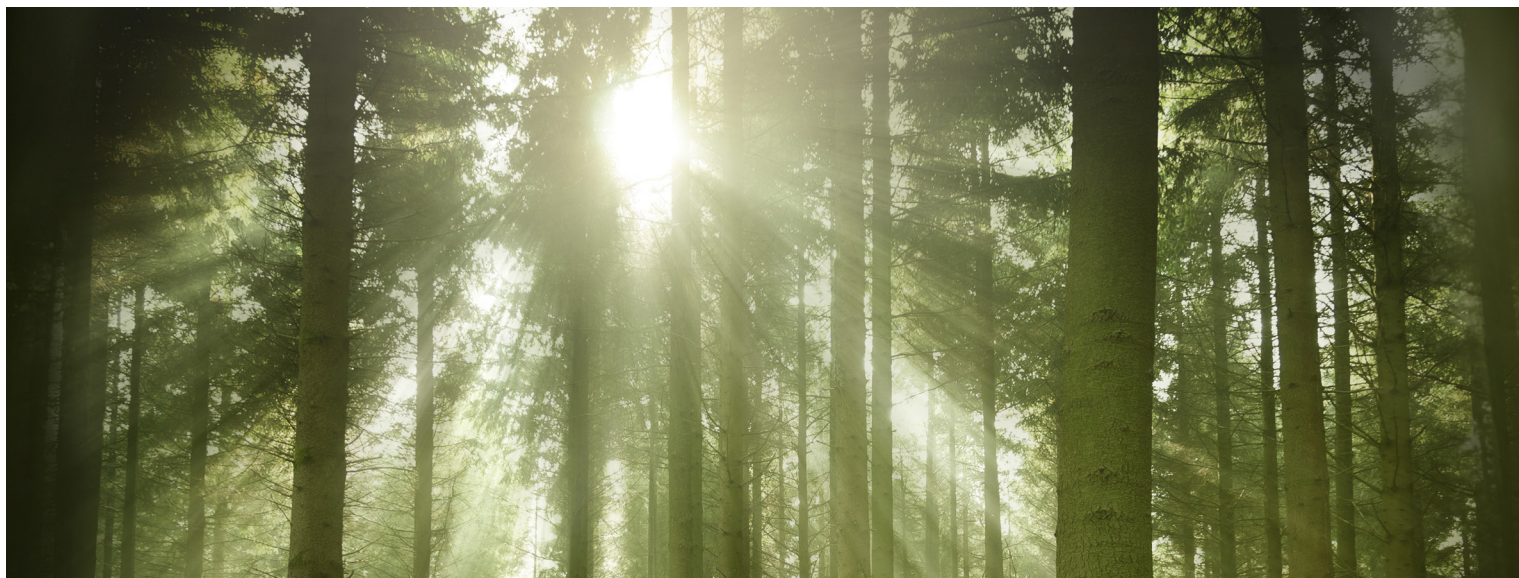
150-tonne locking force for the manufacture of test bodies and prototypes/small scale series.  
650-tonne locking force for the manufacture of large prototypes and small scale series.

## Laboratory equipment for measuring material characteristics

- Pull, bend, and compression measurements
- Impact strength
- Hardness
- Density
- Melting index
- UV resistance
- Determination of setting







# EcoRub AB

Hökmark 114

932 93 LÖVÅNGER

Tel 0913-247 80

E-post: [info@ecorub.se](mailto:info@ecorub.se)

Hemsida: [www.ecorub.se](http://www.ecorub.se)

